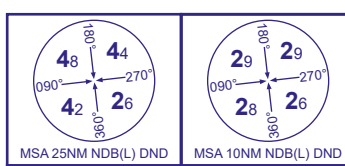


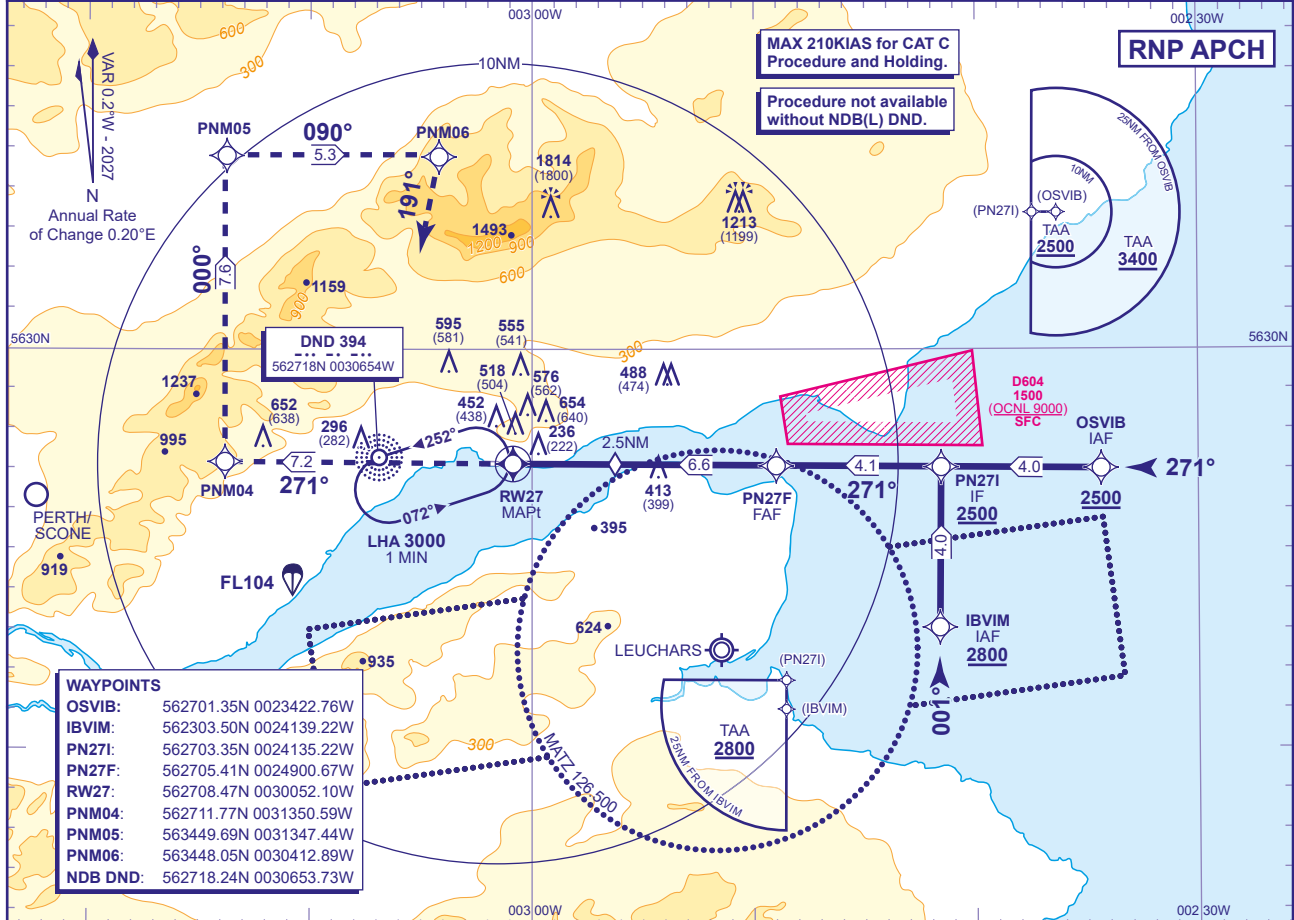
INSTRUMENT DEPARTURE - ICAO

DUNDEE RNP RWY 27
(ACFT CAT A,B,C)



APP	122.905	DUNDEE APPROACH	AD ELEVATION	17
TWR	122.905	DUNDEE TOWER	THR ELEVATION	14
ATIS	119.330	DUNDEE INFORMATION	OBSTACLE ELEVATION	1814 AMSL (1800) (ABOVE THR)
			BEARINGS ARE MAGNETIC	

TRANSITION ALTITUDE
3000

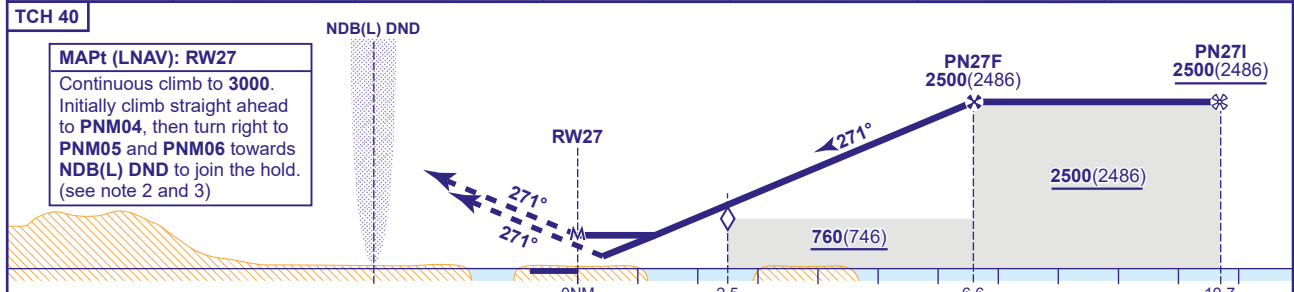


WAYPOINTS

OSVIB:	562701.35N 0023422.76W
IBVIM:	562303.50N 0024139.22W
PN27I:	562703.35N 0024135.22W
PN27F:	562705.41N 0024900.67W
RW27:	562708.47N 0030052.10W
PNM04:	562711.77N 0031350.59W
PNM05:	563449.69N 0031347.44W
PNM06:	563448.05N 0030412.89W
NDB DND:	562718.24N 0030653.73W

RECOMMENDED PROFILE Gradient 6.12%, 372FT/NM

NM to MAPt (RW27)	6	5	4	3	2.5 (SDF)	2
ALT (HGT)	2280(2266)	1910(1896)	1540(1526)	1170(1156)	980(966)	800(786)



MAPt (LNAV): RW27
Continuous climb to **3000**.
Initially climb straight ahead to **PNM04**, then turn right to **PNM05** and **PNM06** towards **NDB(L) DND** to join the hold. (see note 2 and 3)

Aircraft Category	A	B	C	Rate of descent	G/S KT	160	140	120	100	80
OCA (OCH)	LNAV	680(666)	680(666)		FT/MIN	990	870	740	620	500
VM(C)OCA (OCH AAL)	Total Area	970(953)	970(953)							
	South of RWY 09/27	690(673)	750(733)							

NOTE 1 NDB(L) DND is 3.3NM from THR RWY 27 and is offset 230M north of extended RWY C/L.
2 Missed approach MAX 185KIAS.
3 Missed approach reverts to conventional navigation to hold at NDB(L) DND.

CHANGE (4/26): MAG INFO REVISED. MAG HEADINGS.